

COUNTY OF SUFFOLK



STEVEN BELLONE
SUFFOLK COUNTY EXECUTIVE

DEPARTMENT OF PUBLIC WORKS

GILBERT ANDERSON, P.E.
COMMISSIONER

PHILIP A. BERDOLT
DEPUTY COMMISSIONER

March 10, 2014

Ms. Theresa Elkowitz, Principal
VHB Engineering, Surveying & Landscape Architecture, P.C.,
2150 Joshua's Path, Suite 300
Hauppauge, NY 11788

RE: PROPOSED RONKONKOMA HUB SEWERS

Madam:

Pursuant to your conversations with Deputy County Executive Minieri, this will confirm that this Department is pursuing transporting sanitary waste from Ronkonkoma Hub through a force main system connecting to the Southwest Sewer District No. 3 (SWSD#3), where it will be treated and disposed of. A plan of the current proposed route is provided for your review and consideration showing the sanitary connection from the proposed Ronkonkoma Hub Development westward to existing sanitary sewer facilities in the vicinity of the former Central Islip State Psychiatric Facility, approximately 7 miles.

Although plans are in preliminary stages of development, the force main will be installed through either open cut trenching or directional drilling. Critical intersections such as Ocean Avenue (CR 93) and Johnson Avenue, or CR 100 with NYS 454, will be crossed using directional drilling to minimize impact of construction. In both cases the work will pass through a community extremely quickly. Our goal is to complete construction as quickly as possible, not only to complete the work but also minimize the impact of construction to the local community.

We will be exploring the potential of connecting adjacent communities. The capacity of the current system will be sized to handle flows up to 1 million gallons per day. 400,000 gallons per day capacity will be reserved for Ronkonkoma Hub. The remaining 600,000 gallons per day is currently available for either Town to connect to. Discussions have begun with the Town of Islip who is very interested in connecting the Airport and possibly other nearby areas to the facility.

Should you have any further questions regarding these matters, please contact the undersigned.

Very truly yours,

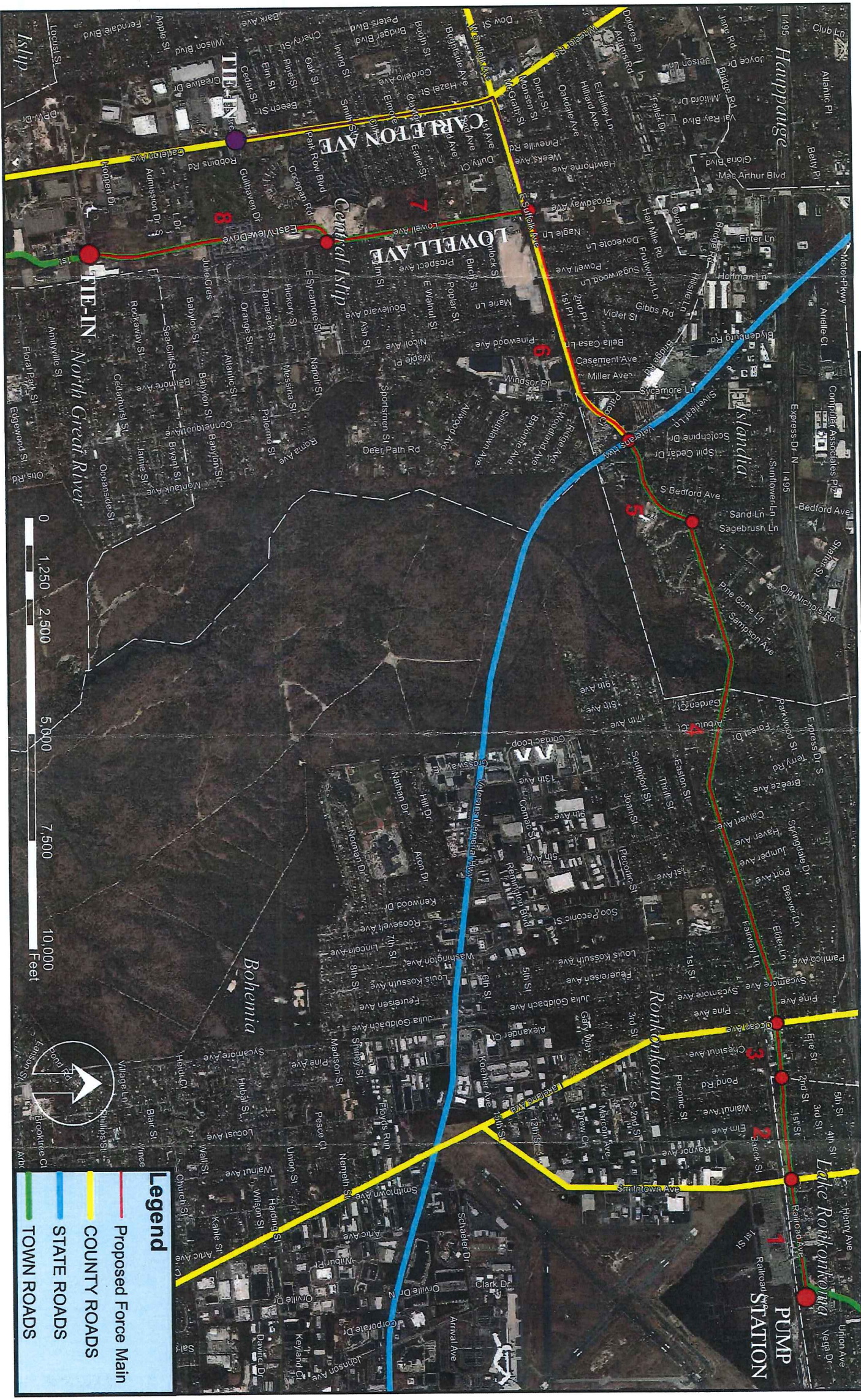
Gilbert Anderson, P.E.,
Commissioner

GA/bd
Attachment

cc: John Schneider, Deputy County Executive
Joanne Minieri, Deputy County Executive/Commissioner of Economic Development
Philip Berdolt, Deputy Commissioner
John Donovan, P.E, Chief Engineer Sanitation

SUFFOLK COUNTY IS AN EQUAL OPPORTUNITY/AFFIRMATIVE ACTION EMPLOYER

FIGURE 2 - PROPOSED FORCE MAIN ROUTING



Legend

- Proposed Force Main
- COUNTY ROADS
- STATE ROADS
- TOWN ROADS

